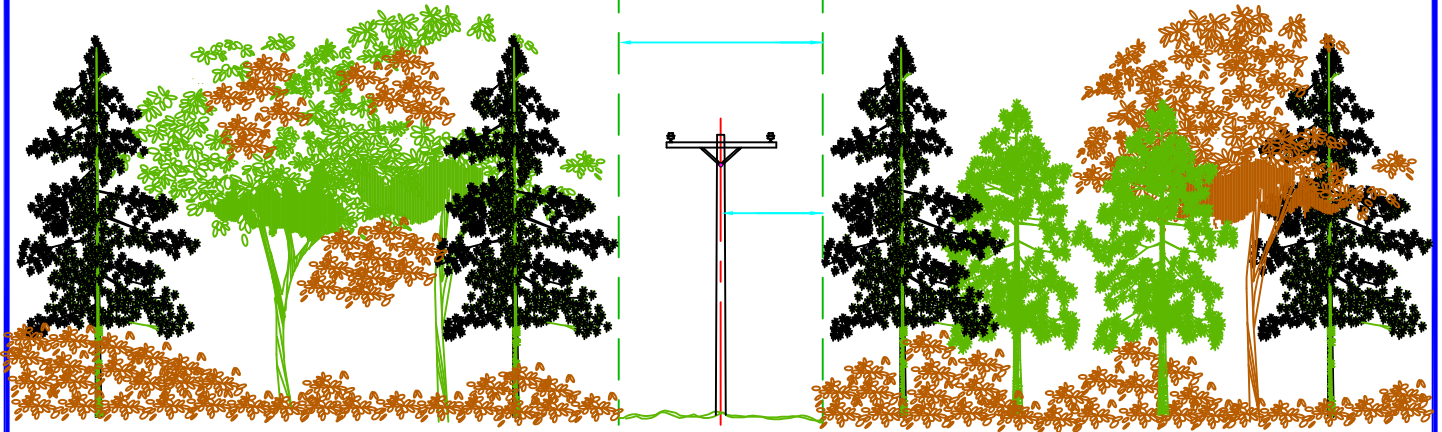
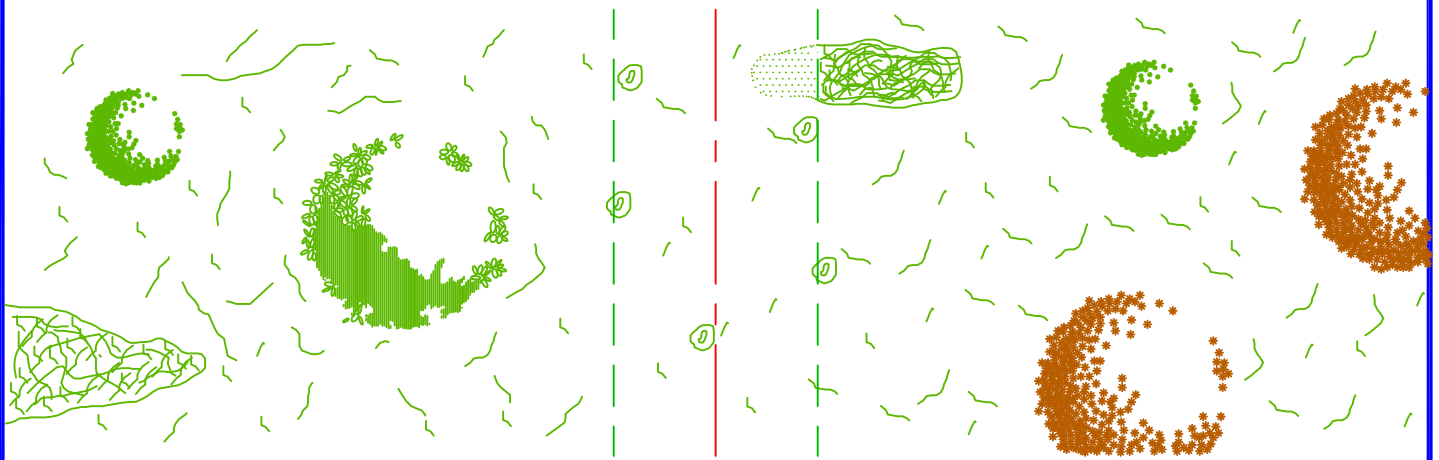


Three phase = 40' ROW (20' each side of pole)

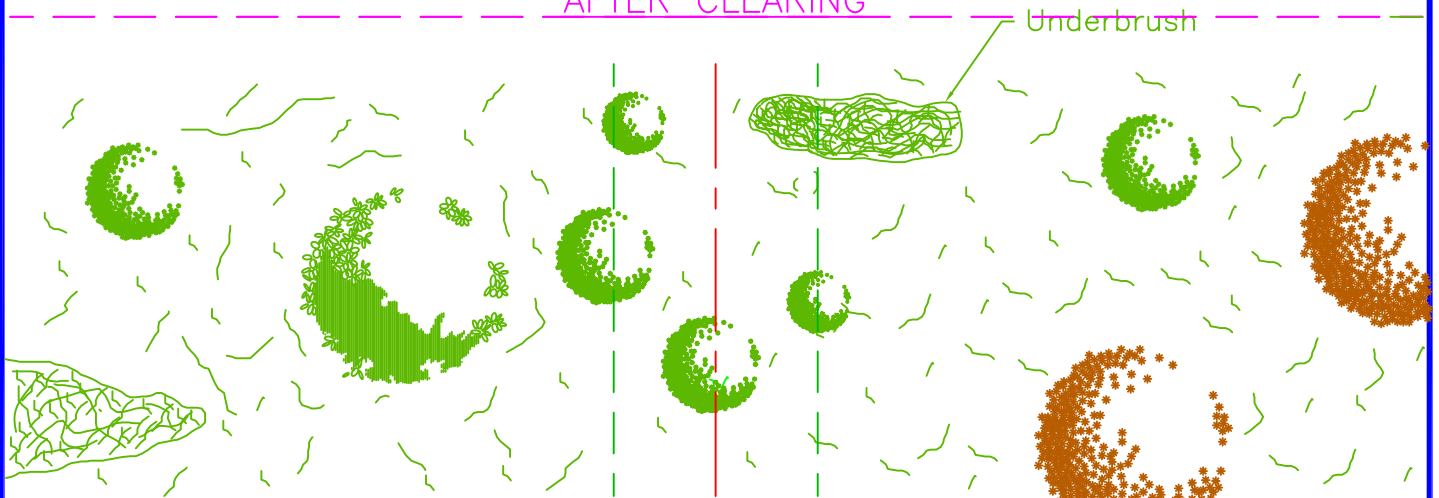
Single phase = 30' ROW (15' each side of pole)



ELEVATION



AFTER CLEARING



BEFORE CLEARING

Brooks and wet lands managed by EMEC cut approval

- All brush shall be cleared.
- Stumps maximum of 6" tall.
- No leaning trees.
- No limbs
- Cut danger trees

Single phase = 30' ROW (15' each side of pole)
Three phase = 40' ROW (20' each side of pole)

RIGHT-OF-WAY CLEARING GUIDE FOR EMEC STANDARD RIGHT-OF-WAY

OCT 2007

EMEC

Eastern Maine
Electric Cooperative

M1.30G